



# GENUINE PARTS

## INSTALLATION INSTRUCTIONS

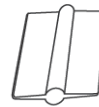
<b>DESCRIPTION:</b>	Rear Bumper Protector - Clear
<b>APPLICATION:</b>	QX30
<b>PART NUMBER:</b>	T99B1 5DC0A

**KIT CONTENTS:**

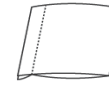
ITEM	QTY	Part Description
A	1	Clear Rear Bumper Film
B	1	Plastic Squeegee
C	1	Squeegee Sleeve
D	1	Installation Instruction Replacement Template



A



B



C



D

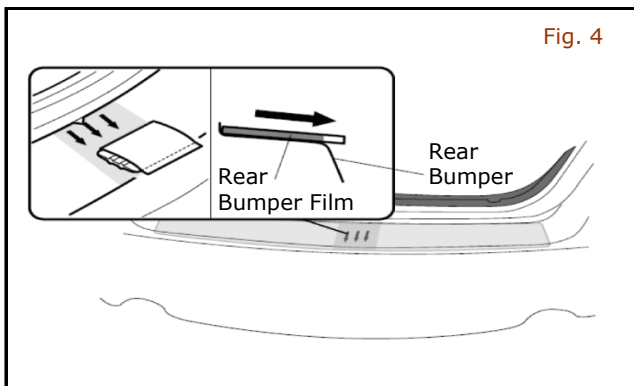
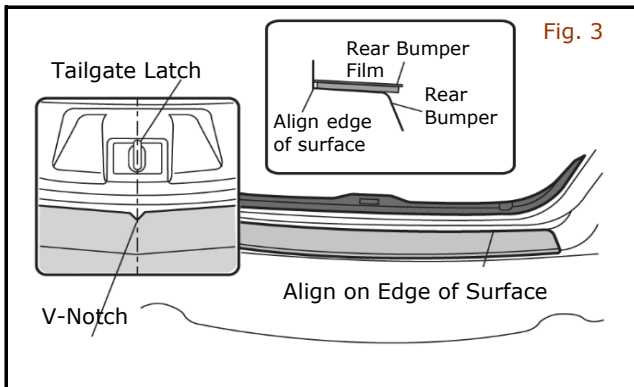
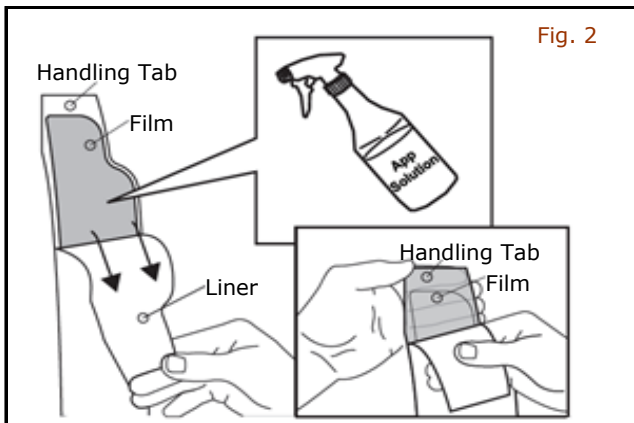
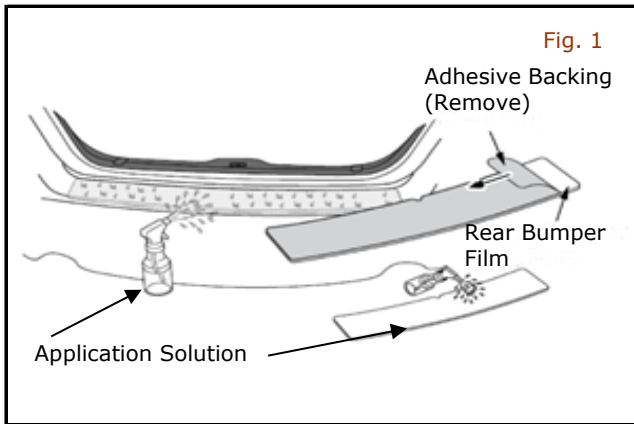
**TOOLS REQUIRED:**

- 90% Isopropyl Alcohol
- Dish Soap
- 32 Ounce Spray Bottle
- Water
- Soft Lint Free Microfiber Cloth
- Pin

**PRE-INSTALLATION WARNINGS, CAUTIONS, CRITICAL STEPS, and NOTES:**

- Dealer Installation Recommended.
- **Application Solution:** Fill a 32 oz. spray bottle with 25% isopropyl alcohol, 75% water, and add 5-7 drops of dish soap.
- Install in a non-dusty environment.
- Thoroughly wash vehicle with soap and water.
- Use tabs when handling film so fingerprints are not transferred to adhesive.
- Vehicle body surface and film must be at a minimum of 70°F for proper installation.

## INSTALLATION PROCEDURE:



1) Open trunk; then, use clean, lint free microfiber cloth to clean surface of rear bumper with 90% or greater isopropyl alcohol solution. Allow area to dry completely.

2) With trunk open, spray attachment area of bumper with application solution.

**NOTE:**

**Take care in extreme heat not to allow application solution to dry before film is applied.**

3) Removing paper liner from film.

- Lay liner film face down on table or other flat surface.
- If table or flat surface is not available, keep film as flat as possible and remove liner by supporting front of film against a leg or vehicle.
- Working slowly, peel white paper from part and spray adhesive side with application solution.

**NOTE:**

**Wet fingers with application solution before touching adhesive side of film.**

4) Align part to rear bumper:

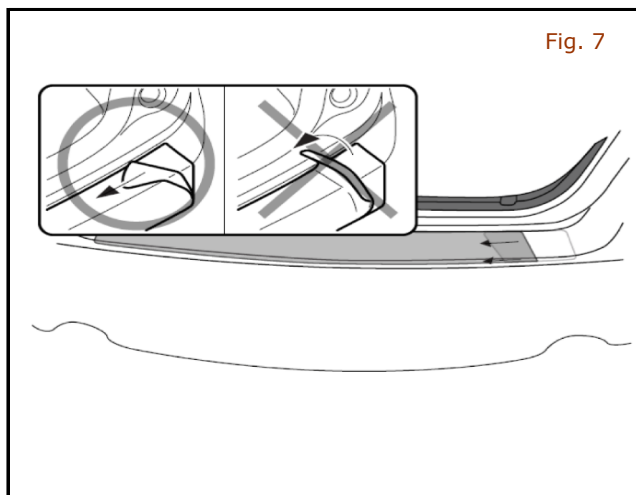
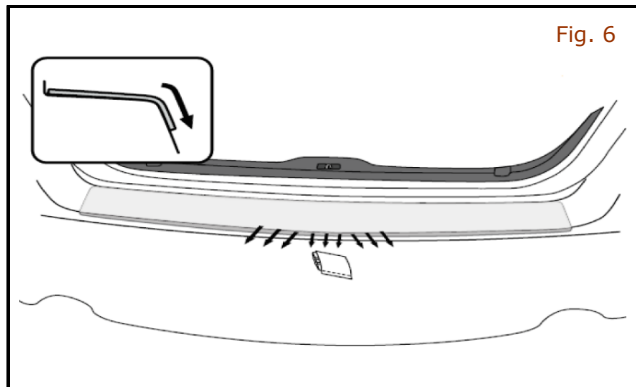
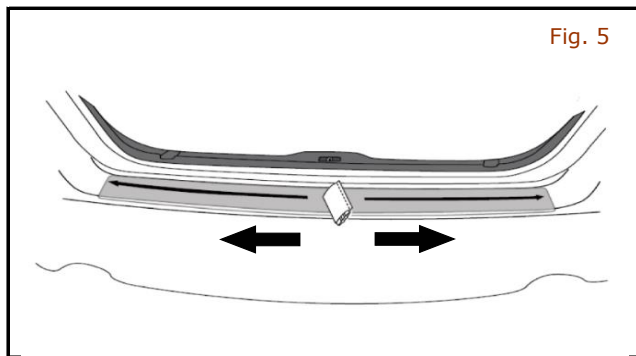
- V-notch in center of premask must align to tailgate latch.
- Top of premask must align to edge of rear bumper.

**NOTE:**

**During alignment, wet fingers with application solution to touch adhesive side.**

5) Use squeegee with soft sleeve and apply pressure to smooth out only top surface at center of rear bumper film using rearward strokes. Do not push forward.

**INSTALLATION PROCEDURE:** (continued)



- 6) Starting from center and working outward, use squeegee with soft sleeve to smooth rear bumper film. Begin in one direction with quick motion and continue across bumper 3 inches at a time. During installation, re-apply application solution to surface of film and re-squeegee to ensure good adhesion and remove bubbles.

**NOTE:**

- **Keep pressure on rear bumper film during application.**

- 7) Once flat surface is completely smooth with no bubbles, use squeegee with soft sleeve to apply rear bumper film to rounded rear edge. Start in center and work outward.
- 8) Application solution can be sprayed under edges if not adhering.
- 9) Ensure all air and water is removed from under film. Re-squeegee any edges that may have lifted.

- 10) Remove premask top protective liner by pulling slowly and horizontally at 180° angle back against itself.

**NOTE:**

- Do not pull upward.**

- 11) Inspect film for air bubbles. If bubbles remain, use a pin to puncture air bubbles, remove excess air by squeegeeing, and wipe up application solution with lint free microfiber cloth.
- 12) If, during installation, graphic tends to lift off of vehicle while premask is being removed, cause is:
  - 1) Too much soap in application solution. Rinse out and use less soap.
  - 2) Not enough pressure on film surface from squeegee. Increase pressure and ensure overlapping squeegee strokes.

**NOTE:**

- Maintain a vehicle body temperature of 70° or higher for a minimum of 30 minutes after graphic installation.**